



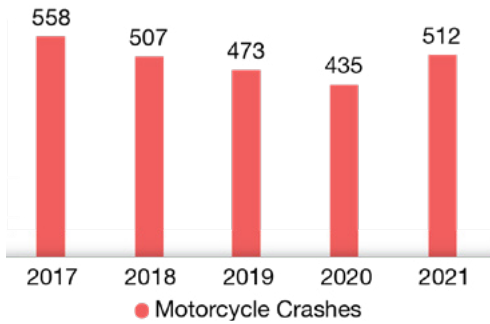
MOTORCYCLE CRASH FACTS



Duval County

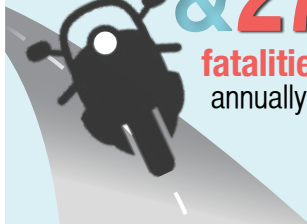
CRASH TRENDS

Motorcycle Crashes by Year, 2017-2021

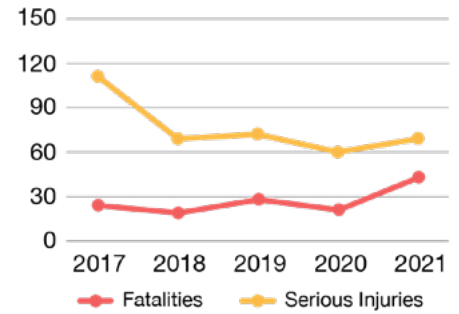


Duval County averages

497 motorcycle crashes & **27** fatalities annually

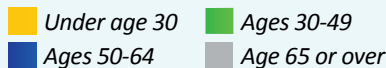


Fatalities and Serious Injuries in Motorcycle Crashes, 2017-2021

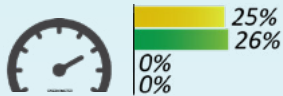


WHEN CRASHES OCCUR

RISK FACTORS IN FATAL CRASHES



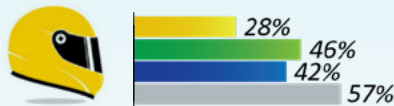
Rider was Traveling 20+ MPH Over the Speed Limit



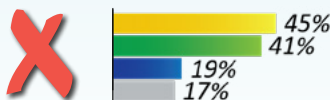
Alcohol and/or Drugs were Involved



Rider was Not Wearing a DOT-Compliant Helmet



Rider was NOT endorsed*

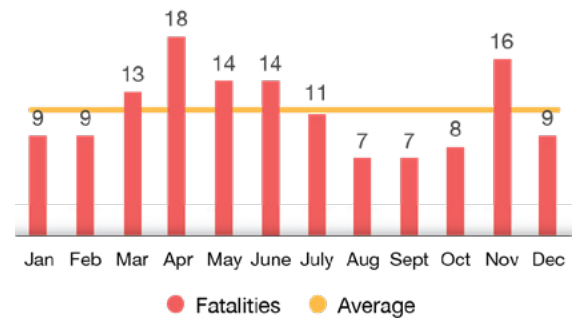


*Required to have a motorcycle endorsement to operate any motorcycle with an engine displacement over 50cc (FL s. 322.03)

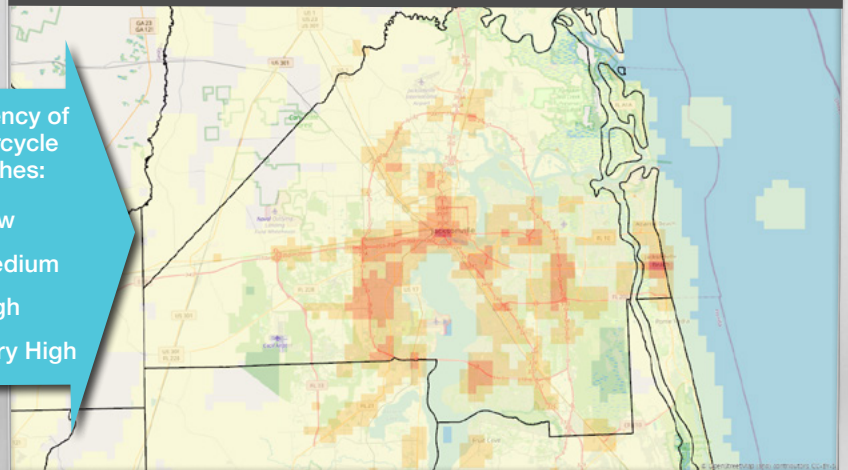
In Duval County, more motorcycle crash fatalities occur in April



Fatalities in Motorcycle Crashes by Month, 2017-2021



WHERE CRASHES OCCUR



Frequency of Motorcycle Crashes:

- Low
- Medium
- High
- Very High