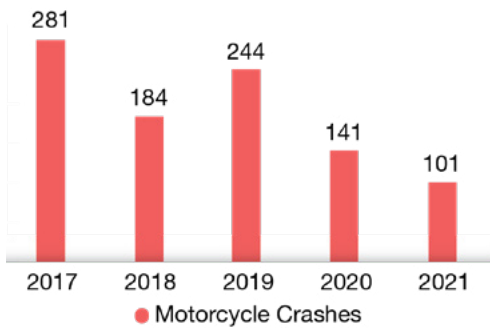


# MOTORCYCLE CRASH FACTS

# Monroe County

## CRASH TRENDS

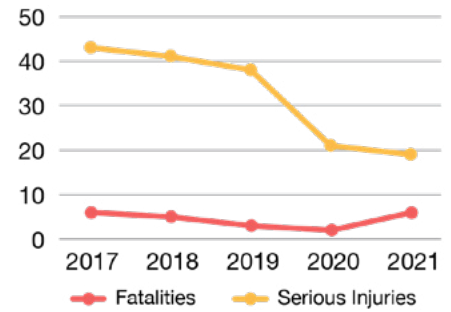
Motorcycle Crashes by Year, 2017-2021



Monroe County averages

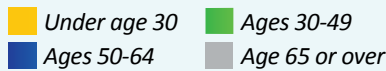
**190** motorcycle crashes  
& **4** fatalities annually

Fatalities and Serious Injuries in Motorcycle Crashes, 2017-2021

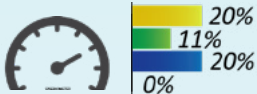


## WHEN CRASHES OCCUR

### RISK FACTORS IN FATAL CRASHES



Rider was Traveling 20+ MPH Over the Speed Limit



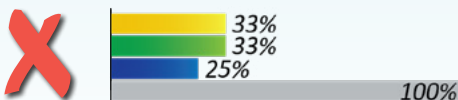
Alcohol and/or Drugs were Involved



Rider was Not Wearing a DOT-Compliant Helmet



Rider was NOT endorsed\*

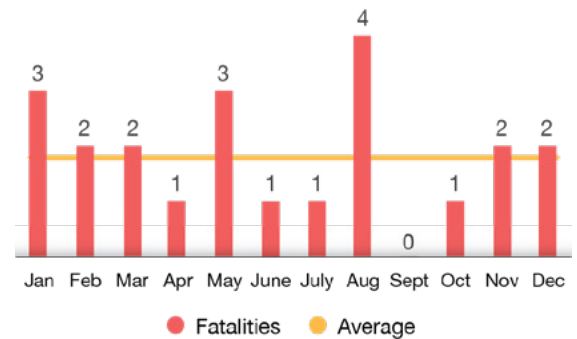


\*Required to have a motorcycle endorsement to operate any motorcycle with an engine displacement over 50cc (FL s. 322.03)

In Monroe County, more motorcycle crash fatalities occur in August



Fatalities in Motorcycle Crashes by Month, 2017-2021



### WHERE CRASHES OCCUR

Frequency of Motorcycle Crashes:

- Low
- Medium
- High
- Very High

